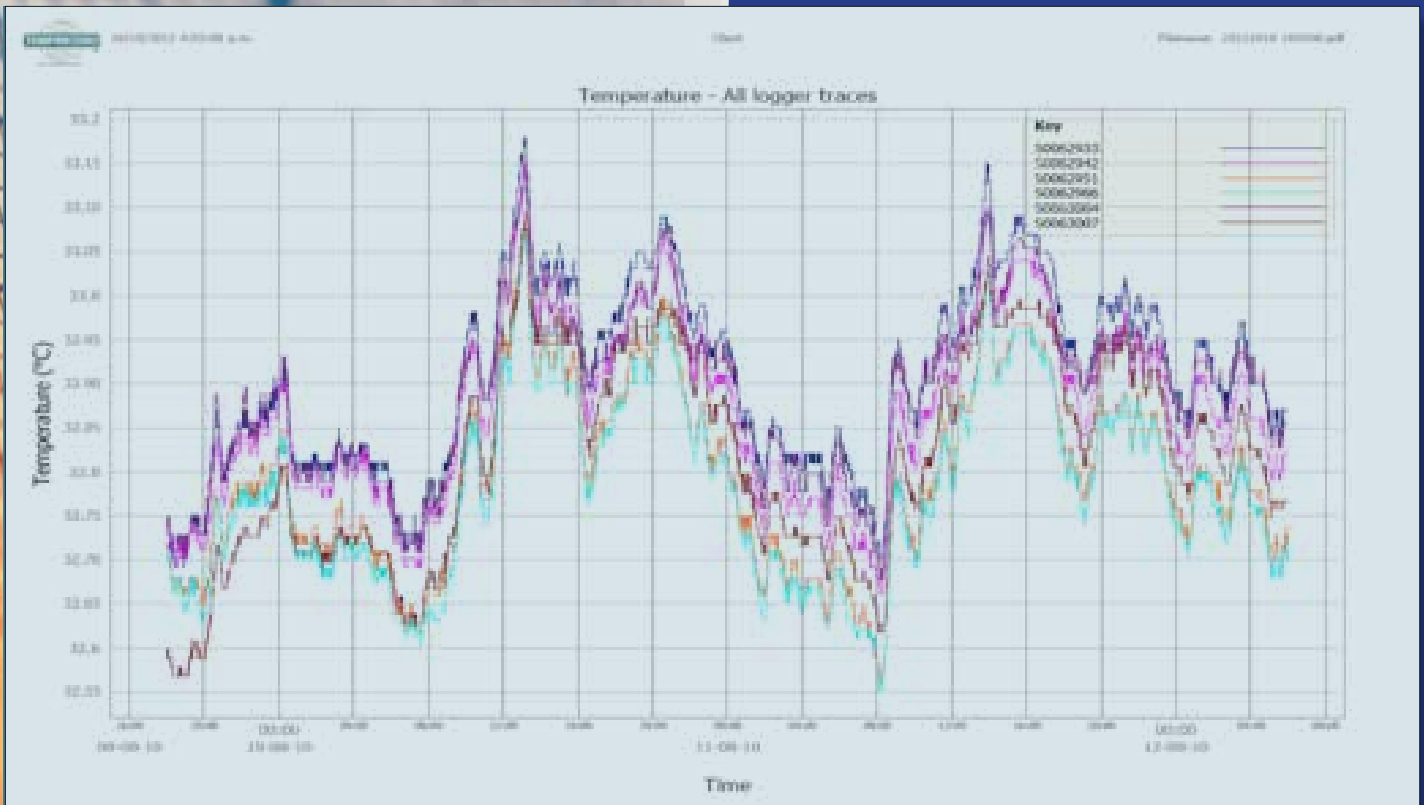




www.temprecord.com

MLV MAPPING SOFTWARE



Simplify mapping/spatial analysis with the Temprecord **FREE** Mapping software for use with any of your Temprecord Data Loggers

- ▶ **Download** software from:
<http://www.temprecord.com/software.html>
- ▶ **Import** your downloaded Temprecord logger files into the MLV (Multi Logger Validation) Software.
- ▶ **Map**
 - Fridges & Freezers
 - Incubators
 - Walk-in chillers / freezers
 - Warehouses
 - Laboratories

Please see page 2





17/02/2011 10:43:39 a.m.

Temprecord MLV Summary Report
MLV Beta Release 1.02.0 Build 228

M Wright

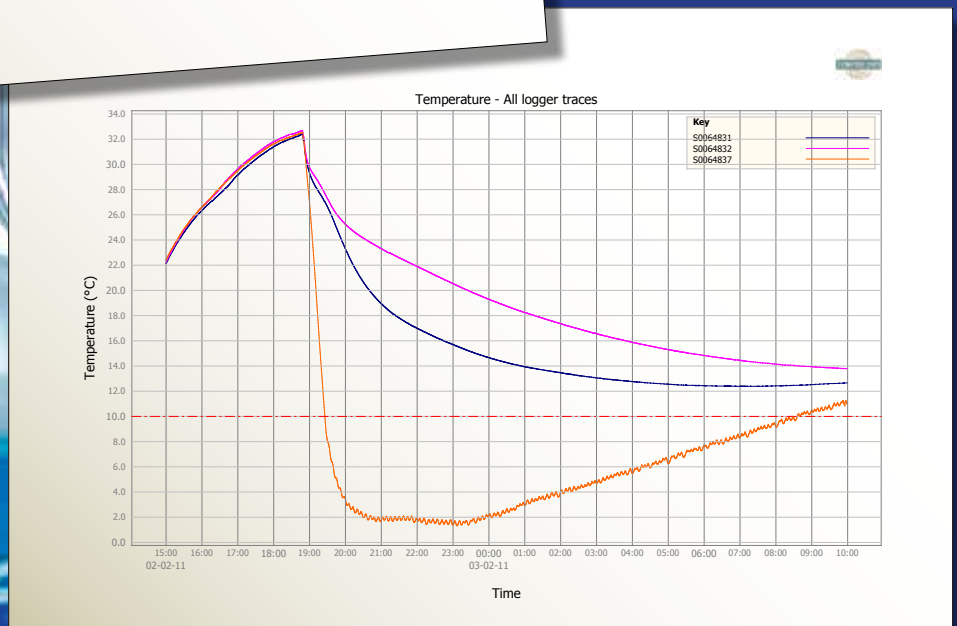
Signed

Company Temprecord
Site Thu 17 Feb 2011 10:43:39
Logged in Windows User Summary Validation Report 17 Feb 2011.pdf
Date Printed
Report Filename Wed 2 Feb 2011 14:59:47 to Thu 3 Feb 2011 09:59:05
Project Name 18:59:18
Reporting Interval Temperature only
Reporting Duration No reference selected
Report Type Temperature Reference
Upper Limit 10.00
Lower Limit -10.00

The following summary report was obtained from the loggers listed below. The entire sample record (more or less) for each logger was analyzed. The reporting interval has been reduced to an interval that includes the time interval logged by every logger. The actual reporting interval is Wed 2 Feb 2011 14:59:47 to Thu 3 Feb 2011 09:59:05. The actual number of samples analyzed and the time they span is shown with each logger.

Logger ID	Samples	From	To	Min	Max	Range	Below	Above	Mean	S. D.	Variance
S0064831	6837	02-02-11 14:59:47	03-02-11 09:59:07	12.389	32.419	20.031	0:00:00	18:59:30	17.896	6.636	44.031
S0064832	6837	02-02-11 14:59:44	03-02-11 09:59:04	13.789	32.690	18.901	0:00:00	18:59:30	20.427	5.802	33.667
S0064837	6837	02-02-11 14:59:45	03-02-11 09:59:05	1.330	32.530	31.200	0:00:00	5:49:40	10.548	10.108	102.168
Mean of loggers	6836	02-02-11 14:59:47	03-02-11 09:58:57	11.372	32.543	21.171	0:00:00	18:59:20	16.291	7.011	49.156
Variance	6836	02-02-11 14:59:47	03-02-11 09:58:57	0.012149	890149	878			42.541		5.193
SD	6836	02-02-11 14:59:47	03-02-11 09:58:57	0.109	12.243	12.134			9.941		9.941
Spread	6836	02-02-11 14:59:47	03-02-11 09:58:57	0.217	22.245	22.028			16.290		16.290
All Loggers	20511			1.330	32.690	31.361					

- Temperature or humidity
- View and compare data with a click of a button
- Easily identify areas of non-conformance
- Use "Start on Date" function on loggers to synchronise start time
- No more complex spreadsheets!
- Save time



Temprecord Calibrated Data Loggers

- Reuse over and over.
 - Calibrated, with corrections built in to logger, no requirement for a correction formula to be applied to downloaded data, avoiding the potential for error.
 - Calibrated to ISO/IEC 17025 calibration laboratory standards, certificate supplied.
 - Accuracy 0.2°C / 0.35°F across stated range.
- Please see data logger brochure for more information.
- **Software is free of charge!**

Temprecord International Limited

PO Box 58 430, Botany,
Auckland 2163, New Zealand.
Phone: (09) 274 9825,
Fax: (09) 273 4020
Email: info@temprecord.com
Web: www.temprecord.com